

# BIOSS LIMC

Cobalt-chromium  
sirolimus eluting  
coronary bifurcation stent

**NEW GENERATION**

Strut thickness **0.07 mm**

International patent



Biodegradable Polymer



BALTON  
since  
1980

**BALTON**<sup>®</sup>

CE 1023

# BIOSS LIMC

## Cobalt-chromium sirolimus eluting coronary bifurcation stent

### Strut thickness **0.07 mm**

#### Technical data overview:

Stent platform material	cobalt-chromium alloy L605
Catheter coating	hydrophilic
MRI	safe
Strut thickness	0.07 mm
Anti-proliferative agent	sirolimus
Radiopacity	excellent
Radial force	high
Pushability and trackability	excellent
Inflation and deflation time	very short
Proximal shaft diameter	2F (0.65 mm)
Distal shaft diameter	2.7F (0.90 mm)
Compatible guide wire	max. .014"
Compatible guiding catheter	5F (.056")
Nominal pressure	10 atm
Delivery system type	Rapid Exchange
Catheter length	140 cm



One profiled balloon  
with diameters corresponding  
to dimensions of the coronary  
bifurcation vessels

#### Caution:

This publication could include technical or other inaccuracies or typographical errors. Changes are periodically added to the information on herein; these changes will be incorporated in the new editions of the publication. Balton Ltd. may make improvements and/or changes in the product(s) described in this publication at any time. This publication is only a commercial information and cannot be handled the commercial offer in the meaning of the art.66 §1 of Polish Civil Code.

# BALTON®

294 Modlińska Str., 03-152 Warsaw, POLAND  
ph.: (+48) 22 597 44 00, fax: (+48) 22 597 44 44  
e-mail: [balton@balton.pl](mailto:balton@balton.pl), [www.balton.pl](http://www.balton.pl)

10/2016

## NEW GENERATION

Bifurcation optimized stents for coronary vessels with one profiled balloon, guided on a single .014" guide wire for a simple and shorter implantation procedure.

This dedicated stent system prevents the side branch from occlusion and the carina tip from being crushed or damaged.



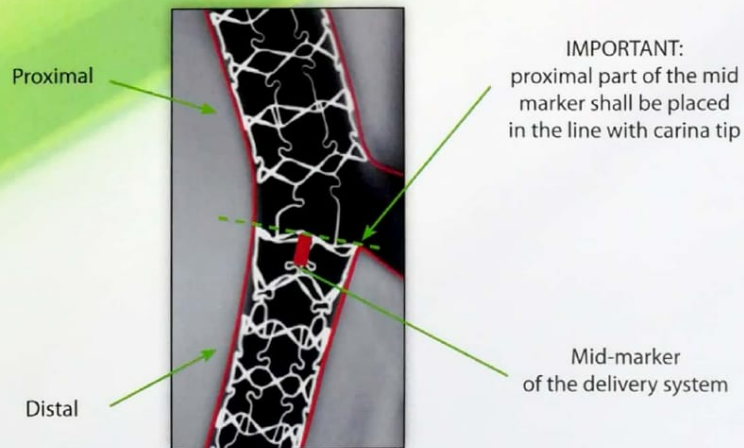
**Cobalt-chromium sirolimus eluting coronary bifurcation stent with delivery system Rapid Exchange**

	Catalog Number	Nominal stent diameter [mm]		Nominal stent length [mm]	Distal length/ Stent length	Proximal length/ Stent length
		Dist	Prox			
<b>New</b>	ZSTB2.50x3.00x1614CS	2,50	3,00	16	55%	37%
	ZSTB2.50x3.25x1614CS	2,50	3,25	16	55%	37%
	ZSTB2.75x3.50x1614CS	2,75	3,50	16	55%	37%
	ZSTB3.00x3.50x1614CS	3,00	3,50	16	56%	36%
	ZSTB3.00x3.75x1614CS	3,00	3,75	16	54%	38%
	ZSTB3.50x4.25x1614CS	3,50	4,25	16	54%	38%
	ZSTB3.75x4.50x1614CS	3,75	4,50	16	56%	37%
<b>New</b>	ZSTB2.50x3.00x1914CS	2,50	3,00	19	54%	39%
	ZSTB2.50x3.25x1914CS	2,50	3,25	19	54%	39%
	ZSTB2.75x3.50x1914CS	2,75	3,50	19	54%	39%
	ZSTB3.00x3.50x1914CS	3,00	3,50	19	55%	38%
	ZSTB3.00x3.75x1914CS	3,00	3,75	19	54%	40%
	ZSTB3.50x4.25x1914CS	3,50	4,25	19	54%	40%
	ZSTB3.75x4.50x1914CS	3,75	4,50	19	55%	39%
<b>New</b>	ZSTB2.50x3.00x2414CS	2,50	3,00	24	56%	38%
	ZSTB2.50x3.25x2414CS	2,50	3,25	24	56%	38%
	ZSTB2.75x3.50x2414CS	2,75	3,50	24	56%	38%
	ZSTB3.00x3.50x2414CS	3,00	3,50	24	57%	37%
	ZSTB3.00x3.75x2414CS	3,00	3,75	24	56%	39%
	ZSTB3.50x4.25x2414CS	3,50	4,25	24	56%	39%
	ZSTB3.75x4.50x2414CS	3,75	4,50	24	57%	38%

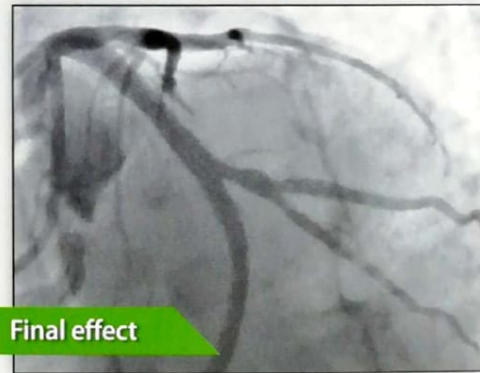
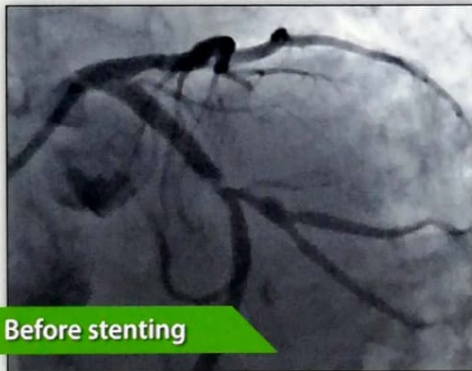
Note: For all the sizes, lengths 15 mm, 18 mm and 23 mm are available. When ordering use Ref. Number, e.g.: ZSTB 2.50x3.00x1814CS



# Innovative Co-Cr sirolimus eluting coronary bifurcation stent system



Implant construction allows Bioss stent adjust to vessel curvature



- Unique configuration of the delivery system ensuring safety and efficacy during the stent implantation procedure
- Delivery system minimizes the negative effects of procedure, protecting the carina tip from being crushed or damaged
- Large cell of the stent in place of side branch entrance gives possibility to enter the SB with any standard size conventional stent
- Precision of implantation procedure thanks to three radiopaque markers



**BALTON**<sup>®</sup>  
www.balton.pl