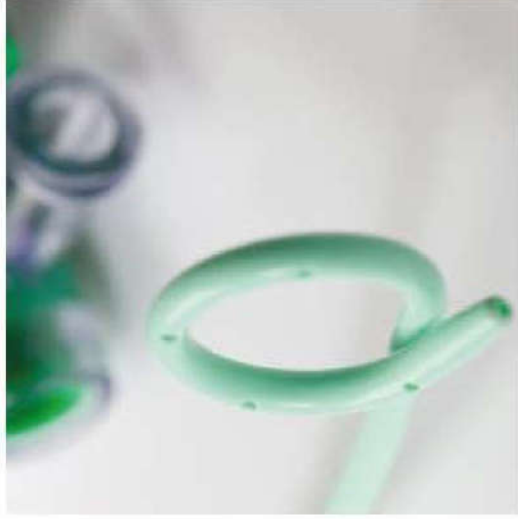
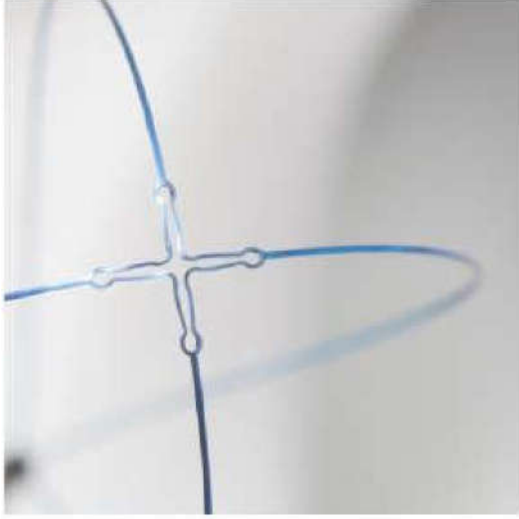


Force Products Urovision



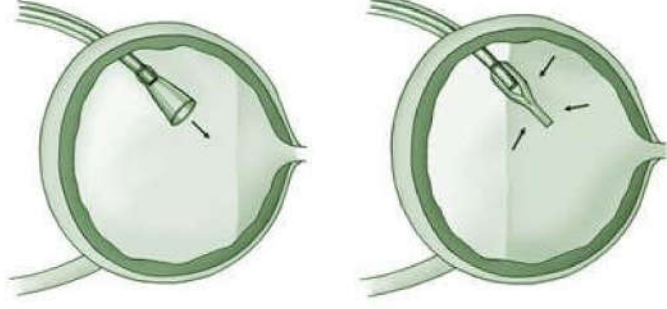
Special Ureteral Catheter



WB-670:

- Because of the Polyurethane material this Ureteral Catheter is softer than a normal one.
- It is easier to move this Catheter over the Guidewire through the Ureter.
- **Even Stones in the Ureter can be passed by easily.**
- Tuohy Borst Adaptor with female Luer connector, for injecting Contrast media.
- Higher X-Ray visibility than a Standard Ureteral Catheter
- Atraumatic tip
- Compatible with Guidewires up to 0.035"inch.
- with cm-Graduation
- Available in FR06, with open tip

Anti-Reflux Stent



- Polyurethane
- With valve on the bladder end, prevents reflux in the Ureter
- With holes in shaft (only the parts which are in the kidney and the ureter)
- Ring marks
- X-ray visible

Technique USP!

Visioflux Stent

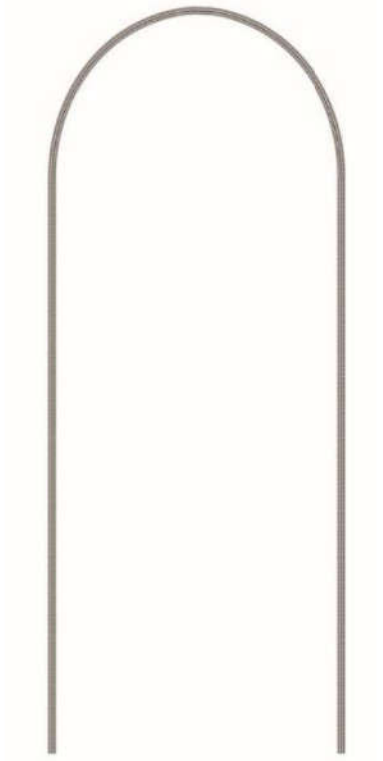


- Polyurethane
- Because of the ideal length of the stent, which ends before the ostium, irritation in the bladder and the ostium are prevented
- Pigtail only on the kidney side
- **Less material, which prevents the Stent from Incrustation**
- **With Suture on the bladder side, for easy removal**
- With holes in shaft
- Ring marks
- X-Ray visible



**Cheaper alternative to
Boston's Polaris!**

Tumorstent with Metal Helix



- Polyurethane
- **Metal helix makes the shaft extremely stable**
- Soft pigtails
- Without holes in shaft, to prevent the stent from tumor ingrowing
- Ring marks
- X-ray visible

Special VisioStent Tumor Stent

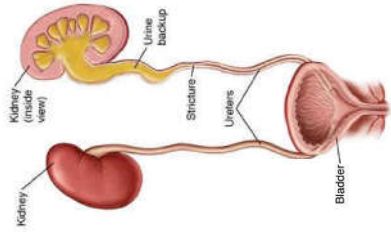


- Polyurethane
- **Made of only one material, so breaking is not an issue**
- Soft pigtails
- Without holes in shaft, to prevent the stent from tumor ingrowing
- Ring marks
- X-ray visible

Stenosis Stent



- Polyurethane
- Thickening in shaft (proximal, middle or distal)
- 2 Pigtails
- Ring marks
- X-ray visible



Intubata Stent



- 2 versions: thickening up to the renal Pigtail or down to the bladder side
- For stenosis which are reaching the renal/distal junction
- 2 Pigtails
- Ring marks
- X-ray visible

ESWL Ureteral Stent



- Polyurethane
- **Special lumen, shaped like a „Star“, for perfect drainage of stone fragments**
- Special ureteral stent for ESWL therapy
- 2 pigtails
- With holes in the shaft
- X-ray visible

OLYMPUS Your Vision, Our Future



Pediatric Ureteral Stent



Small sizes down to 3 FR!

- Polyurethane (PUR)
- Drainage openings in the pigtails and the shaft
- Open or closed tip
- Marking for exact positioning
- X-ray visible

Bestellnummer mit Führungsdraht	Bestellnummer ohne Führungsdraht	Größe (CH/FR)	Länge (cm)	Draht (inch)	Drahtlänge (cm)
ST-190308	ST-197308	3	8	0.018"	150
ST-190310	ST-197310	3	10	0.018"	150
ST-190312	ST-197312	3	12	0.018"	150
ST-190315	ST-197315	3	15	0.018"	150
ST-190318	ST-197318	3	18	0.018"	150
ST-190320	ST-197320	3	20	0.018"	150
ST-190408	ST-197408	4	8	0.025"	150
ST-190410	ST-197410	4	10	0.025"	150
ST-190412	ST-197412	4	12	0.025"	150
ST-190415	ST-197415	4	15	0.025"	150
ST-190418	ST-197418	4	18	0.025"	150
ST-190420	ST-197420	4	20	0.025"	150
ST-194708	ST-1974708	4.7	8	0.028"	150
ST-194710	ST-1974710	4.7	10	0.028"	150
ST-194712	ST-1974712	4.7	12	0.028"	150
ST-194715	ST-1974715	4.7	15	0.028"	150
ST-194718	ST-1974718	4.7	18	0.028"	150
ST-194720	ST-1974720	4.7	20	0.028"	150



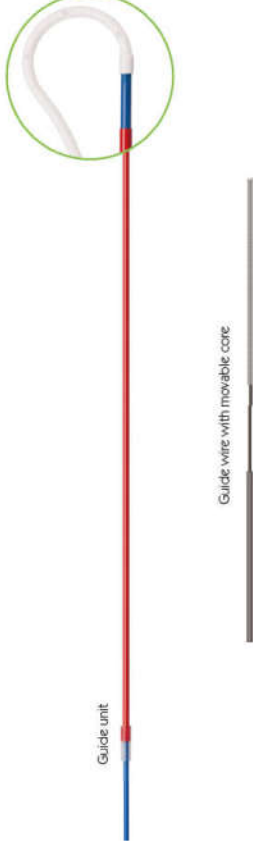
Steering Devices



Visiomatic:

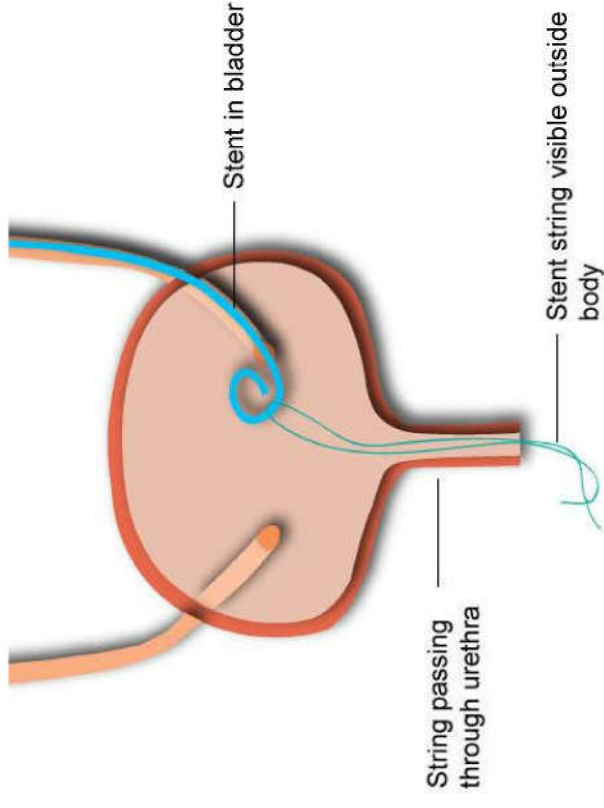
- To maneuver in the Ureter
- Easy disconnection of the stent
- With adapter to inject contrast media (just with stents without holes in the shaft/pigtails)
- FR06 and FR07 with Guidewire with movable core

Standard Steering device:



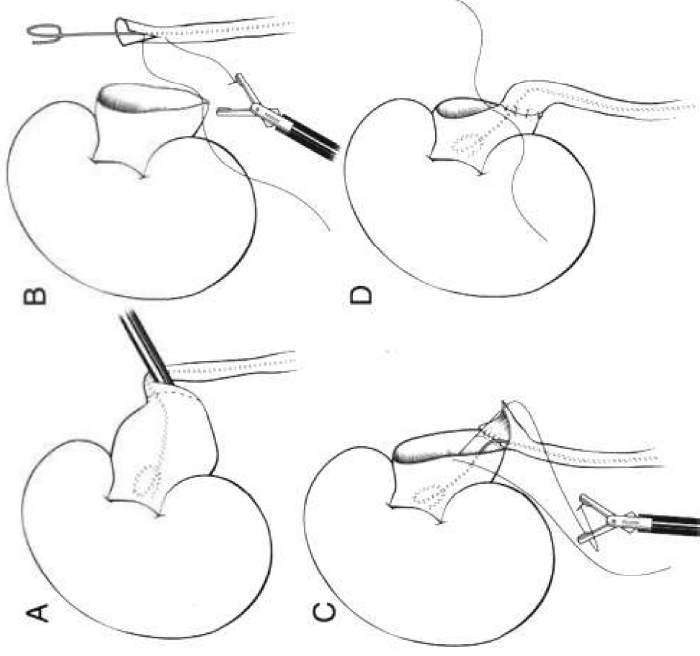
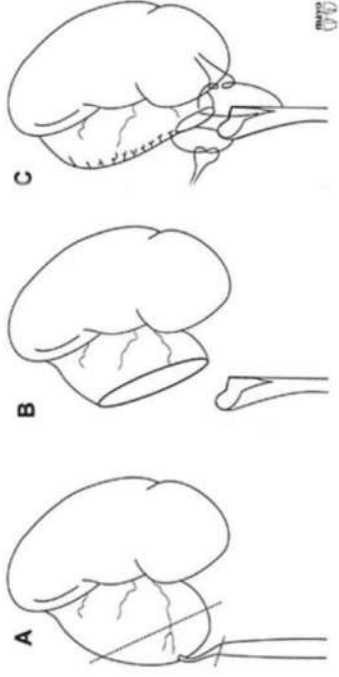
Stent with Suture

- **Steerability** : Stent movement forward and backwards
- **Easy removal** without second cystoscopy (recommended only for short indwelling time; infection risk; e.g. ESWL, pre- and postoperative)
- Only for short term



Pyeloplasty Catheter

Pyeloplasty is the surgical reconstruction or revision of the kidney to drain and decompress the kidney



<https://www.youtube.com/watch?v=To6u8mz9Nn0>

Pyeloplasty Catheter

Post operative (max. 10 days) catheter after/prior renal pelvis plastic.

Insertion: intra-operative (percutaneous)

Ureter part: 20 cm



Less complications than putting a normal double-J:

- Failure placing stent and migration
- Obstruction
- Urinary tract infection
- Urinary leakage

Variations:

4 FR – 9 FR; 50/20 cm

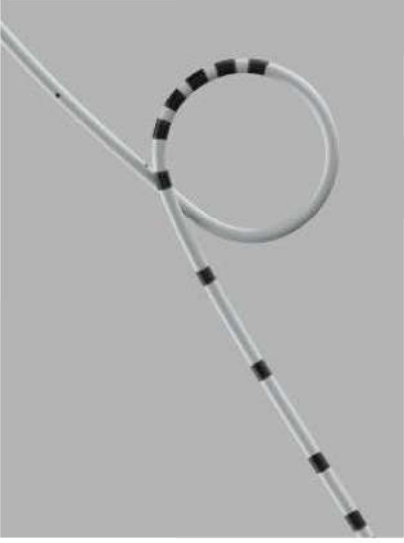
Pediatric:

Ureter part: 6 cm; Percutaneous drainage part: 20 cm
Available in 5 FR and 6 FR sizes



Competing Technologies

Salle Intraoperative Pyeloplasty Stent Set



Websinger Catheter



Needle adapter



- For supraventricular urinary diversion
- Polyurethane
- Transparent material with x-ray contrast strips and plastic stylet
- 5 drainage openings at the proximal end for unimpeded urine discharge
- Open or closed tip
- Markings for exact positioning
- Application e.g. following neobladder formation

Alternative

Mono-J

